

FENDT

Fendt 300 Vario





New Fendt 300 Vario. Yes.

Since 1980 the 300 series has combined generations of experience with highest demands for quality and performance. That's why we say Yes. Because the Fendt 300 Vario offers everything that you need. See for yourself and say Yes to this compact all-rounder.



Fendt 300 Vario. Just right.

Those who are already familiar with the manoeuvrable compact tractor know how much it can do. Whether on grassland, in the field, during transport or for municipal work – offering even more comfort, features and efficient technology, the Fendt 300 Vario is your reliable partner for the daily challenges of your work.

Combined flexibility and efficiency.

The Fendt 300 Vario Profi is a compact tractor to make your daily work more flexible and efficient.

- Powerful 4.4l capacity engine
- VisioPlus cab for optimum visibility and increased spaciousness
- 110l pump for increased output at lower speeds
- Fendt CargoProfi front loader offering smart functionality
- Straight-forward operation from the VarioCenter featuring the Varioterminal 7" and a comprehensive suite of VarioGuide options.
- Electric spool valves offering timing and flow control
- LED work lights
- Multifunctional joystick offering 10 programmable keys for operating ISOBUS implements, including control via the Variotronic headland management system
- 40kph transport speed at reduced engine speed (1,700rpm)
- High payload of more than 3.5t
- Self-levelling front-axle suspension with longitudinal arm for optimum ride comfort
- Steering-angle and speed controlled automatic 4WD and diff lock engagement
- VarioActive accelerated steering for optimum agility



The Fendt 300 Vario offers the perfect features for any application. Choose your optimum solution from the Power, Profi and ProfiPlus variants. The Fendt 300 Vario Power models offer you the ideal features for increased versatility in grassland operations, arable farming, transport, cultivation, specialty crops, municipal work. It also excels as a farmyard tractor. Its robustness and durability are most compelling. The Fendt 300 Vario Profi provides the special extras to give you added comfort and functionality required for your individual application and will make your daily work a lot easier.

Say Yes!

	kW	hp
Fendt 310 Vario	74	101
Fendt 311 Vario	83	113
Fendt 312 Vario	90	122
Fendt 313 Vario	97	132

Rated power (ECE R 120)*

VERSATILITY AND FLEXIBILITY

Designed for hard work.

Just what you need for a successful work day

The Fendt 300 Vario meets all your requirements for robustness and flexibility. Increased traction and even more ride comfort thanks to the new front axle suspension with longitudinal arm, steering angle dependent 4WD automatic and 100% differential locks in both axles – the more in function that makes your work easier, from field to transport operations.

Safe driving even with high payloads

The new Fendt 300 Vario is based on a robust cast half-frame, which is designed for a permissible overall weight of 8,500 kg and a high payload of over 3,500 kg. The space-saving half-frame design creates the space required for the new suspension with longitudinal arm, which provides especially high ride comfort. The waisted design of the half-frame creates more space for an optimal steering angle, which means greater manoeuvrability.

Powerful hydraulics

At 110 litres of output the load-sensing pump (LS control pump) has a high volume capacity. This pump capacity permits the engine speed to be kept low, which saves fuel effectively, even during demanding operations. The Fendt 300 Vario is equipped with a powerful 110l/min LS control pump as standard in the Profi equipment level. The Power variant has an 84l/min constant flow pump as standard and may be equipped with a 110l/min pump.

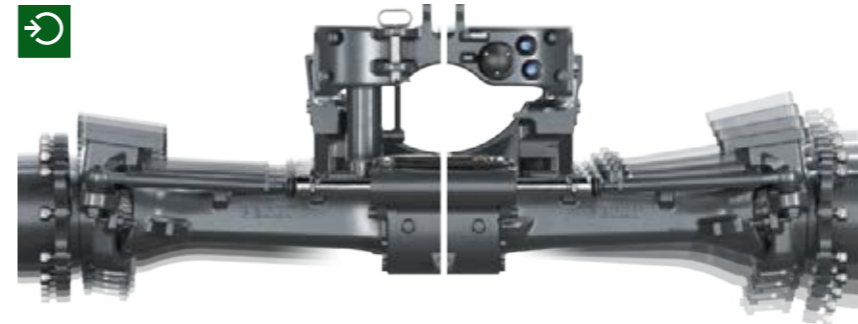
Extend your tractor

The Fendt 300 Vario is the perfect tractor for loader work. Its compact design and the large steering angle permit agile driving. Loading work can be monitored completely through the panoramic windscreen of the VisioPlus cab – even when the front loader is fully raised. High hydraulic capacities ensure fast lifting movements and precise loader response, even at low engine speeds.



The floating front linkage control system is of particular advantage for grassland front mower operations, front mulching implements or snow ploughs as the implement will quickly adapt to uneven terrain.

The compact half-frame design permits smooth front axle suspension, installation of a longitudinal arm with a suspension cylinder, and a lift capacity of 5.2t. The suspended longitudinal arm improves transmission of pulling power by up to 7% and thus ensures higher area coverage. Self-levelling ensures constant ride comfort, even with varying loads.



The waisted half-frame without protruding parts means it has an excellent steering angle. Thanks to the pivoting mudguard, the steering angle can be fully utilised.



Don't miss out on efficiency and comfort: the 300 Vario series tractors offer you the same top-level VarioGuide guidance system as our larger rangesto ensure comfort and minimised overlaps for your grassland or field work at up to ± 2 cm accuracy. These systems are compatible with many common correction sources.



The front linkage is fully integrated into the half-frame, achieving exceptional levels of robustness. The front linkage lower links may be folded up close to the tractor – which provides more free space for front loader work.

THE 300 VARIO OPERATOR ENVIRONMENT

You favourite place with a wide view.



Robert Rager, dairy farmer and Fendt operator from Southern Germany: "Driving is a lot of fun, because the tractor is easy to operate. You can find your way around immediately and the cab is so comfortable. This machine is simply fantastic!"

Comfort and control like the big ones

Equipped with the VisioPlus cab and easy to operate Variocentre, the Fendt 300 Vario meets all expectations for comfort and practicality. You will immediately feel at home in the cab. Operator and passenger seats, visibility, controls and suspension – the entire body of the cab has been thought out thoroughly from the ground up and designed for your well-being and optimal working conditions.

Clear view to the outside

The panoramic windscreen in the new cab is a great help in keeping an overview. The front window, without cross bar, curves up into the roof. That triples the viewing angle: at 77 degrees you have an unobstructed upward view – even to the completely raised front loader. A door is available for the right-hand side for even more flexible entering and exiting. If you prefer a windscreen that opens, there is also one available for the Fendt 300 Vario with a divided window pane. In the VisioPlus cab you have a total glass area of 6.2m² for all-round visibility without a B-pillar getting in your way.

More space to enjoy life

The Fendt VisioPlus cab offers plenty of space for your comfort. This already starts when you climb up into the cab on the wide step treads. With more than six square metres of glazing, the cab is not only visually larger – you also have a greater sense of space thanks to the 2520-litre air space and the well thought-out ergonomic arrangement of all the components. All operating elements are easy to reach. Numerous storage spaces provide practical stowing options.

Superior comfort

A perfectly fine-tuned cab suspension is key to safe and comfortable operation. The mechanical cab suspension minimises vibrations effectively. The pneumatic cab suspension included in the Profi and ProfiPlus packages features a self-levelling function at the rear.

Panoramic windscreen with 77° field of vision for a full view upwards and to the wheel arches.



One-piece side window and unobstructed all-round visibility without a B-pillar.



The wide-angle mirror is integrated into the main mirror and considerably increases your field of vision.



Segment wipers with intermittent operation or parallel wipers for an even larger wiper field.



The suspension system and the individual armrest adjustment on the driver seat ensure comfortable work days. The super comfort seat also has seat heating, a rotary adapter and a pneumatic lumbar support.



Cables can be led into the cab from the outside, neatly and through the closed rear window. Dirt and moisture stay outside.

THE ENGINE ON THE FENDT 300 VARIO

Yes, this drive is a joy.



Andrew Herron, arable farmer and Fendt operator from Belfast, Ireland

"We started with one Fendt 300 Vario, and now we have four. These machines do really good work every day, and they are top in terms of fuel consumption."

Lively and efficient.

The power range of the Fendt 300 Vario goes from a maximum output of 113hp to 143hp at a top speed of 40kph. The 4.4l AGCO Power engine delivers more power and torque in the 300 series. The all-round tractor is extremely fuel-efficient: The low rated speed of 2,100rpm, a new cooler unit and a high-capacity air filter ensure high efficiency with low fuel consumption.

Economical and environmentally friendly

Also saves on emissions: The SCR exhaust technology with AdBlue exhaust gas treatment proves to be particularly fuel-efficient. The additional injection of the AdBlue urea solution reduces nitrogen oxides to a minimum. In combination with a diesel oxidation catalyst

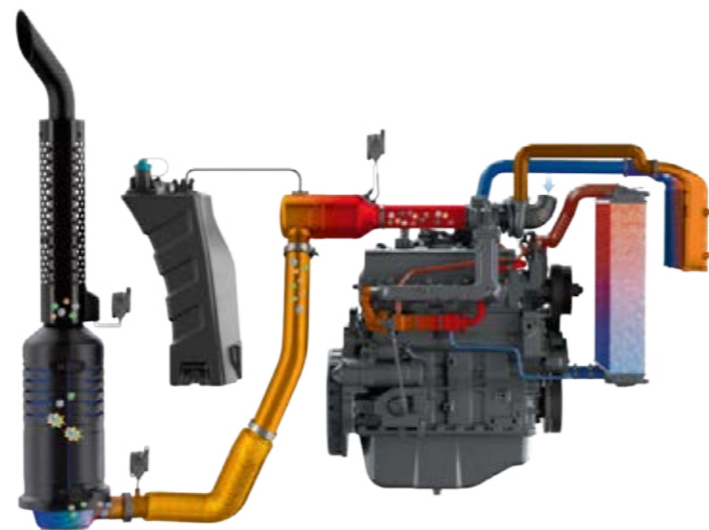
(DOC) and the exhaust gas recirculation (AGReX), emissions are reduced effectively and the tractor complies with the newest Stage 4 / Tier 4 Final emissions standards.

Economical and low-maintenance

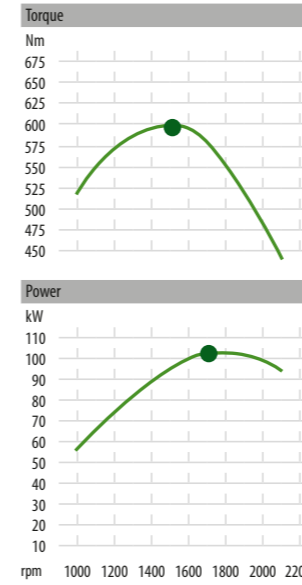
The fuel pre-filter with thermostatic valve allows the tractor to start reliably, even at very low temperatures well below zero, since the pre-warmed fuel flows from the return into the prefilter. The radiator and filter are arranged for ease of maintenance. The fuel and AdBlue consumption indicator not only monitors the current consumption, but also logs the consumption for different operations. Furthermore, they assist the operator in maintaining an efficient driving style.

Exhaust treatment system

SCR technology means the exhaust gases are treated with AdBlue, a 32.5 percent urea solution which converts nitrous oxides (NO_x) into harmless nitrogen and water.



Engine characteristics – Fendt 300 Vario
596Nm torque, 143hp maximum output at 1,750rpm



More strength through powerful 4.4-l engine.



The Diesel and AdBlue filler necks are located on the same side of the tractor within easy reach from the ground.



The fuel pre-filter with thermostatic valve allows the tractor to start reliably even at very low temperatures well below zero. The radiator and filter are arranged for ease of maintenance.

THE TRANSMISSION ON THE FENDT 300 VARIO

Infinite driving pleasure: Fendt Vario transmission.

Fendt Vario - pure driving comfort

The infinitely variable Vario transmission ensures maximum ride comfort and savings potential. You can drive from 0.02 km/h to a maximum speed of 40 km/h continuously, without shifting. You always work at the exact speed that matches the work. This provides enhanced performance that will always remain outside of the grasp of power shift transmissions. The tractor is easy to drive, either per joystick or with the pedal. The Vario transmission and engine are designed for low fuel consumption.

The right speed ...

... for the PTO shafts can be easily adjusted using the keys on the Variocentre: the 540, 540 E and 1000rpm speeds are available for the rear PTO. Practical are the external controls on the rear mudguard. The 540 Eco PTO is ideal for light work, where fuel can be saved at a reduced engine speed. The PTO shafts on the Fendt 300 Vario have outstanding efficiency, since power to the PTO output shaft is transmitted via a direct drive line from the Vario transmission.



Well-balanced and efficient with TMS

Frequently changing operations are on the agenda for an all-rounder. Whether for transport or heavy draft work, the Fendt 300 Vario has been designed for ideal performance, low fuel consumption and reduced wear on components. The tractor management system TMS controls the engine and transmission so that they are always working at an economical optimum without you having to think about it. You just have to specify the desired speed.

Relaxed working at the limit

The Fendt 300 Vario Profi offers the fully automatic 2.0 maximum output control which determines the engine load according to the power demand. The engine is therefore always operating in the ideal engine speed range. Operators can also adjust the maximum output control 2.0 manually, if they wish. The kick-down mode, where the tractor accelerates similar to a passenger car with automatic transmission, means the tractor takes off swiftly.

The ingenious Fendt Vario transmission is a hydrostatic-mechanical power split drive. With increasing speed, the share of the mechanical power transmitted through the planetary set increases. Power splitting and hydrostats that swing 45 degrees ensure outstanding efficiency.

The driving mode can be selected individually: The speed can be controlled with either the pedal or the joystick.



Drive direction can be changed with either the joystick or the reverser lever with integral stop and go function.

The new integrated front PTO delivers 1000 rpm. The direct drive line from the engine to the implement means high efficiency.



The separate transmission and hydraulic oil supplies prevent oil mixing and guarantee high operational reliability of the transmission.

NEW FENDT VARIOTRONIC

Efficient operation and a comfortable drive.

All-round visibility: Fendt operating concept

Well thought-out to the last detail, but always with an eye on the whole – Fendt tractors offer intuitive operation and functionality across all ranges. The operating elements comprising the Varioterminal, joystick, cross-gate lever, rocker switches and membrane keypad are clearly laid out in the Variocentre.

All in one: the Varioterminal 7"

Straightforward, intuitive and convenient – the new Varioterminal 7" with LED backlighting unites all tractor and implement functions in one terminal. ISOBUS-capable implements can also be controlled directly with the Varioterminal. You will find your way around easily in the flat menu hierarchy and the clear display. You can operate the functions directly on the touchscreen or by pressing a key. The beautifully edgeless, smartphone style LCD Varioterminal delivers brilliant colours and a sharp resolution. It is extremely scratch-proof and easy to clean. At night the display will be automatically dimmed to reduce glare while featuring an additional night mode.

Headland work made easy - Fendt Variotronic™

Electronic assistance is a real benefit, especially at the headlands. The Variotronic™ headland management system will save you up to 1,920 hand movements in 160 turns. You can program up to 39 settings into the terminal for each turning manoeuvre at the headland, both when standing still and when driving. Later all it takes is a touch of a button to activate the automated procedures at the headland. You can drive without having to reposition your hands.

Always on the ball

The VarioGuide steering system ensures optimum work results and maximum comfort. We offer two different receiver systems - NovAtel® or Trimble®. Existing Trimble® RTK infrastructures on the farm, such as NTRIP, can continue to be used. A number of correction signals are supported, depending on the receiver, for example, EGNOS/WAAS or RangePoint™RTX™, CenterPoint RTX™ and Ntrip. If you lose your signal due to terrain issues, VarioGuide uses Trimble®-xFill™ technology to continue work reliably up to 20 minutes without a correction signal available.

Using the optional integral interface, all ISOBUS capable implements can be operated with the Varioterminal, so additional implement terminals are not needed.

The optional automatic steering axle lock automatically unlocks the steering axle at a predefined speed on trailers with self-steering axles. On straight stretches, the locked self-steering axle ensures stable handling. Operators do not need to lock the self-steering axle manually outside of the preselected speed range and when reversing.



With the two-gate multi-function joystick, you can operate the Fendt 300 Vario like one of the Fendt high-horsepower tractors. The numerous functions on the joystick reduce unnecessary hand movements.

Crossgate lever for the 1st and 2nd hydraulic spool valves and the front loader, including the controls for the 3rd and 4th circuits.

Linkage control module (EPC) with PTO controls.



Fendt Expert driver training. Sign up through your dealer. For more information see www.fendt.com/training

QUALITY STANDARD AND RETENTION OF VALUE

My tractor, my future.

Investment with a high retention of value

Those who invest in a tractor, also invest in the future. The Fendt 300 Vario is your investment in an excellent, high-yielding future. This includes efficient, cutting-edge tractor technology and proven Fendt quality as well as the latest software updates during servicing - an exclusive Fendt service for maximum resale values.

Absolutely easy to operate

Ideal diagnostic capabilities and long maintenance intervals ensure the tractor keeps on running. Failures can be analysed quickly through fault messages shown on the display. Separate hydraulic circuits mean your transmission oil only needs to be changed every 2,000 hours under normal conditions. The Fendt 300 Vario has a number of factors that keep downtimes and maintenance costs low.

Long-term economy

High levels of efficiency are reflected in higher yields while using fewer resources, such as fuel, operating inputs or time. The Fendt 300 Vario continues the tradition of its predecessor and delivers high performance at low engine speeds – so there is less wear on all the components and diesel and AdBlue consumption is reduced. Its high overall profitability pays off during every operation.

Certified Fendt Quality Management System according to DIN EN ISO 9001

Since 1995, Fendt has undergone regular independent audits for its quality management system and has been successfully certified.

Certified Fendt Occupational and Health Safety Management System OHSAS 18001

Since 2008, Fendt has been certified and distinguished for the successful implementation of measures in occupational and health safety.

Fendt means high quality. To honour this promise, running quality control takes place during daily production. Once your Fendt 300 Vario is delivered to your farmyard, it has already undergone all quality tests along the entire production line.

The engine compartment is very easy to access for inspection and maintenance, even when the front loader mounting parts are attached. The bonnet with two separate side panels is easy to open.



Less effort, more free time: The compact cooler unit is easily accessed and, thanks to the large clearance between the coolers and the flat cooler floor, it is fast and easy to clean.

Certified Fendt Environmental Management System according to DIN EN ISO 14001

Since 2000, this certificate has proved Fendt's responsible management of the environment.



Become a Vario pro with driver training: Our Fendt Expert Training will show you how to efficiently use all of the functions on your tractor. Our team of competent professional trainers teach you how to utilise the entire performance potential of your Fendt tractor. Sign up through your dealer. Go to www.fendt.com/training for further information.



You can find the your local Fendt dealer here.
www.fendt.com/Händlersuche

FENDT STARSERVICE FOR EXCELLENT CUSTOMER SERVICE

Invest today in your reliable performance for tomorrow.



100% quality, 100% service: Fendt StarService

To ensure that your Fendt 300 Vario delivers 100 percent performance at all times, we offer you 100 percent service. In addition to the best diagnostics-capability and ease of repair, this includes availability of replacement parts 24/7 during the season. Furthermore, the Fendt Service network guarantees short paths between you and our trained Service staff. You also get a 12-month warranty on original Fendt parts and their installation. Repairs with original parts ensure that your Fendt tractor retains its value.

Performance and profitability under contract

A Fendt StarService contract gives you full cost control with the best service. The Fendt service package includes all the prescribed maintenance work based on competitive fixed prices. The ProService package includes regular maintenance and repairs in combination with an extended warranty of up to 6,000 total operating hours or up to five years.

Customised financing and rental solutions

Purchasing machinery is a high capital investment. Your Fendt dealer will assist you in working out a customised financing plan for your new machine together with the agricultural financing experts at AGCO Finance. If you have a short-term need for additional capacity or prefer long-term use without having to buy, your Fendt sales partner has the ideal rental offer for you.

Up-to-date software for maximum value retention

Every time your tractor comes in for servicing, your Fendt dealer will update the entire tractor software. Then you can profit from new, additional features for your Fendt. You will have access to the most recent operating benefits ensuring proactive value retention as your Fendt is always kept up to date.



The Varioterminal informs you about upcoming maintenance work and servicing dates, it even has a reminder function.

Use the AGCO Parts Books To Go smart phone app to find and order Fendt replacement parts quickly and easily. The app is available through the App Store or the Google Play Store. Please contact your Fendt dealer for your personal access data.



The high-capacity air filter ensures optimal air intake and cleaning. The air filter is easy to replace.



The best product, the best services: Certified Fendt dealers are distinguished by their first-class expertise and their comprehensive range of services. They regularly undergo strict audits to prove their high-quality of service. Your Fendt is in the best hands here.

FENDT CARGO FRONT LOADER

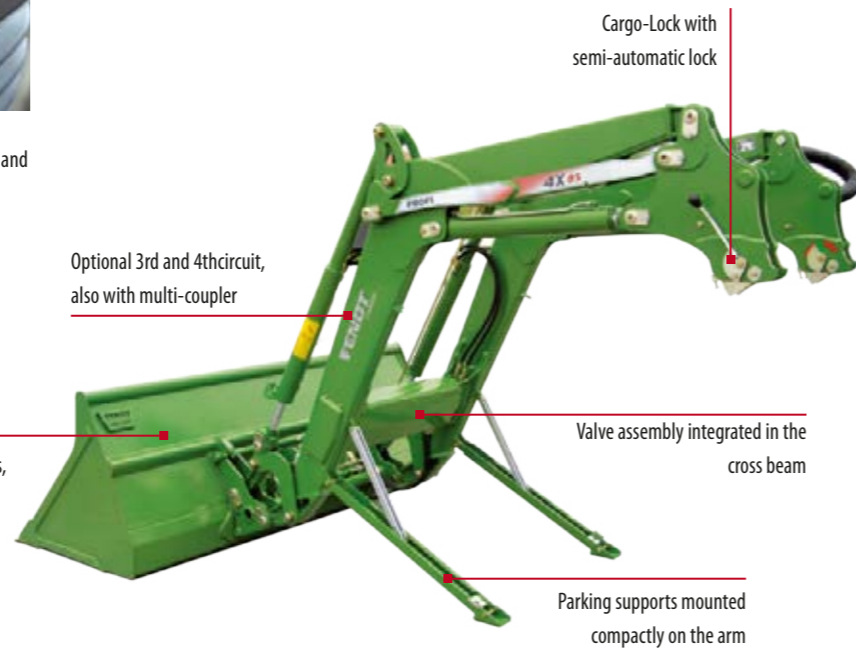
Load under control.



Display for crossgate lever and weighing system: individual and total weight and limiting of the working range for the arm and attachment.



Membrane keypad for implement lock and damping activation.



Comprehensive line of Fendt attachments, optimally adapted to the Fendt Cargo

Optional 3rd and 4th circuit, also with multi-coupler

Cargo-Lock with semi-automatic lock

Valve assembly integrated in the cross beam

Parking supports mounted compactly on the arm

Ease of operation

You can operate the front loader easily with the crossgate lever. Your left hand remains free for steering and reversing. You control the speed with your foot. The Cargo front loader is offered for the Fendt 300 Vario models in four versions - Cargo 3X70, 4X75, 4X75 compact and CargoProfi 4X75. On the 4X75 'compact' version the arm is attached 100 mm closer to the cab to increase stability. The VarioActive superimposed steering system makes the 300 Vario ProfiPlus as agile as never before.

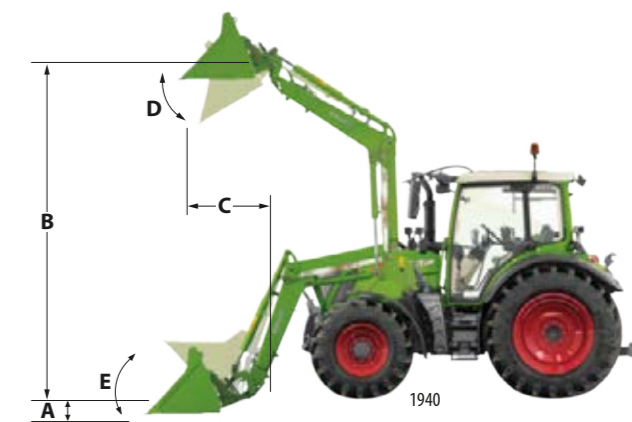
Exact loading with CargoProfi

Thanks to the precise measuring and tilt sensor system on the CargoProfi 4X75, you know exactly how much you are loading. Weigh your load with the touch of a button and utilise the full loading capacity. This also saves the trip to the weighing station. The CargoProfi offers top and bottom limits for lifting height and tipping angle. Your bucket is emptied completely thanks to the integrated shake function, which loosens any adherent material. The memory function saves positions and makes repetitive jobs easier.

On the Fendt CargoProfi, for example, the tipping angle can be limited when loading very high trailers. The Memo function is especially practical for repeating sequences, for example, the horizontal lower position can be targeted automatically. The weighing function permits monitoring of the weight of the load.



Fine adjustments to the valve functions can be made on the Varioterminal. For example, you can control the flow rate precisely and easily using the rotary controls and function keys.



	Fendt front loader	3X/70 ²⁾	4X/75	4X/75 compact	4X/75 profi
A	Digging depth (mm) ¹⁾	60	150	220	150
B	Lifting height (mm) ¹⁾	3750	4155	4085	4155
C	Dumping distance (mm) ¹⁾ B = 3.5 m	1450	1685	1585	1685
C	Dumping distance (mm) ¹⁾ B = max.	1030	1145	1045	1145
D	Angle of emptying	55°	55°	55°	55°
E	Angle of backwards tilt	48°	48°	48°	48°
	Lift capacity over full height (daN)	2000	1940	1940	1940
	Max. lift capacity (daN)	2140	2250	2250	2250

¹⁾ depends on tyres
²⁾ Max. tyre size 480/65R24 (max. diameter 1,260 mm)

Fast and easy loading at your fingertips.

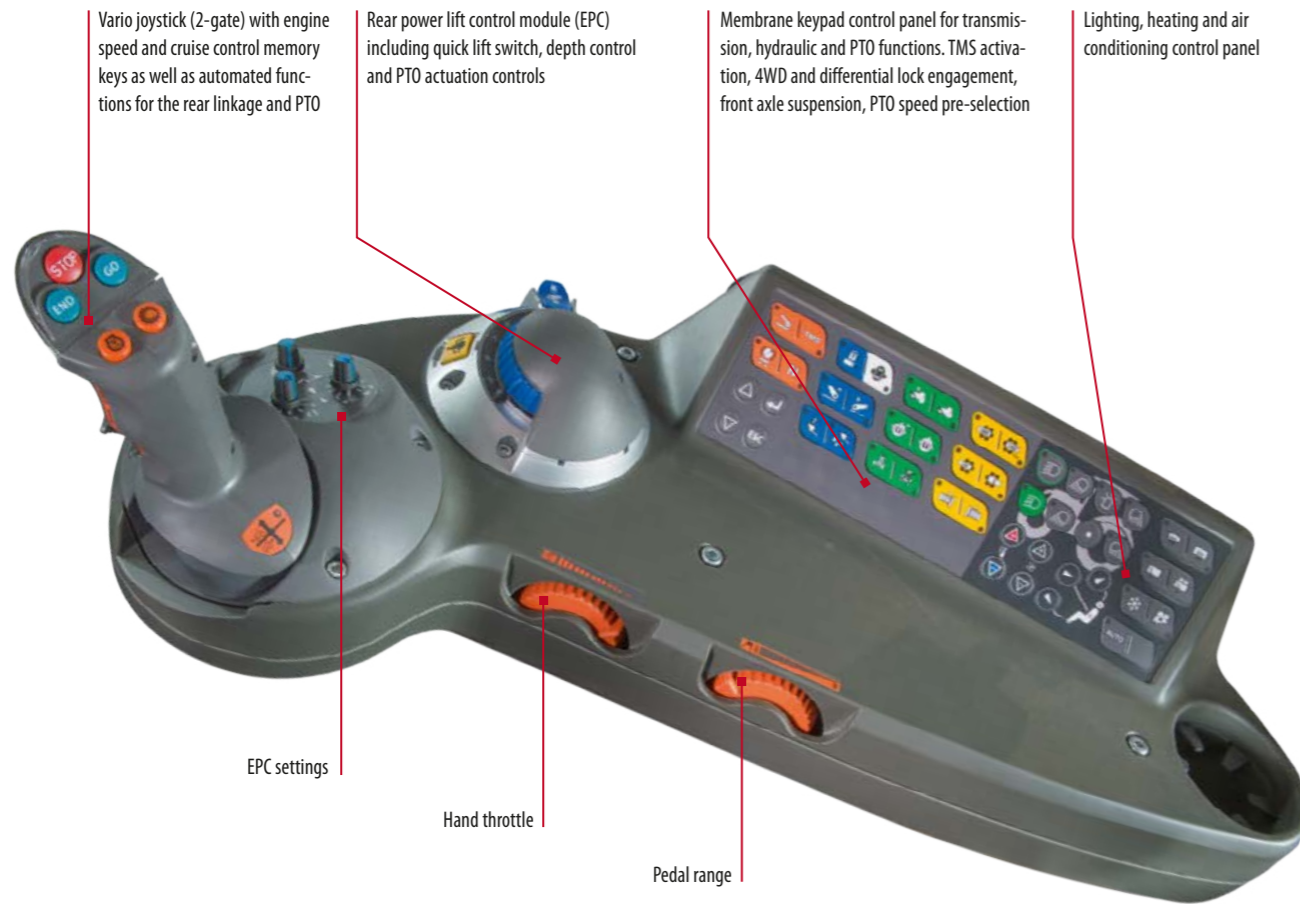
The front loader controls are perfectly integrated into the overall operating interface on the right armrest and Varioterminal. There is no need to move your hands around. Your left hand selects the driving direction while your right hand operates the crossgate lever for the front loader. You control the speed with your foot. With the reverser, you can change driving direction quickly and easily, without wear. The high hydraulic output offered by the Fendt 300 Vario models ensures quick loading and unloading: the load-sensing pump will deliver up to 110l/min.

Optimised front loader suspension

The Fendt Cargo front loader offers an optimised suspension system. Gas pressure reservoirs absorb vibrations and shock loads so they are not transmitted to the tractor body. This saves wear and tear on the tractor and ensures a long service life. Combined with the front-axle and cab suspension systems, the loader suspension system creates a pleasant environment, making it a real joy to use the Fendt 300 Vario with a front loader.

FENDT OPERATING CONCEPT

One interface for all functions.



Ease of operation

Operating the Fendt 300 Vario Power is straightforward and easy using the fully integrated Variocentre. The Vario joystick, the linkage pad and the illuminated keypad are combined in a clearly laid out control panel. The arrangement and colour coding for all operating elements matches the design on current Fendt tractors and guarantees easy and fast operation across all ranges.

Clearly laid out

The entire membrane keypad is backlit and ensures safe operation in the dark. The lighting is controlled using neatly grouped buttons. A big advantage is the central button for switching on and off preselected work lights. You can control the transmission, shuttle control and cruise control with the 2-gate Vario joystick. There are five additional functions: automatic linkage control, two Tempomat cruise controls, one speed memory and the acceleration rates.



Fendt Variotronic control system

For the first time ever the intelligent Variotronic electronic solutions have found their way into the Fendt 300 Vario class. With the first generation of the Varioterminal, Fendt already set new standards for agricultural equipment back in 1998. The demands placed on the terminal functions have increased significantly. At the same time, it must remain easy to use. Fendt's answer is Variotronic.

25 implement memories

Many Varioterminal settings may be saved under a unique name and retrieved at a later date. For example, if you have dedicated settings for the tractor and implement for your seed drill operations, these settings can be easily reloaded and adjusted, if necessary. Of course, operators can also save their own custom settings.

FENDT VISIOPLUS CAB

Your most comfortable second home.



The clearly laid out and ergonomically designed VisioPlus cab offers the best overview, both to the operating elements and the field. The windscreen is available as a continuous panoramic window or as a hinged pane. An additional door can be chosen in place of the right side part.



■ The comfort seat features air suspension and an easy-to-use armrest adjustment system.



□ The super comfort seat has a seat heater, rotary adapter and pneumatic lumbar support - prerequisites for comfortable work during long shifts.



■ Your Fendt cab offers a number of different storage spaces and compartments so everything has its place.



■ The cooling compartment offers space for a meal and a cool drink.

□ The pneumatic cab suspension (Profi and ProfiPlus equipment levels) reduces vibrations to a minimum and provides high ride comfort. It is supported on four points with integrated self-levelling: the cab rests on two conic bearings at the front and on two air spring elements at the rear.



■ Wide steps allow safe and easy entry and exit. The door handle is easy to reach from the ground.



■ The hatch integrated in the roof offers additional ventilation on hot days.



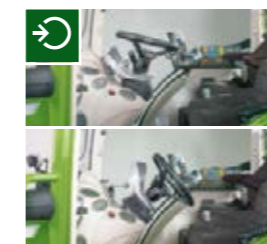
■ The integrated air conditioning ensures optimal cooling and comfort – manually controlled in the Power variant or fully automatic control as an option on the Fendt 300 Vario Profi and ProfiPlus variants.



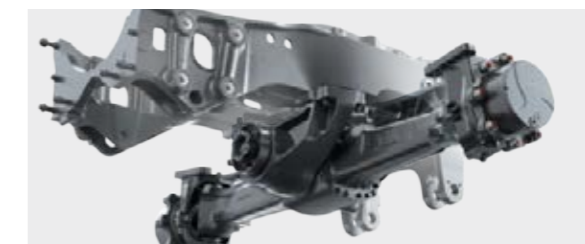
■ Numerous sockets are available for external devices.



■ The comfortable passenger seat with backrest and safety belt offers passengers safety and comfort for long work days.



For an optimal seating position, the steering wheel must be at the right height and tilt angle. The steering wheel and cockpit is individually adjustable.



■ The waisted cast half-frame of the Fendt 300 Vario is the rugged base for the entire tractor – engine, cooler unit, front linkage, front PTO and front axle are mounted on the half-frame. Thanks to the stable construction, larger axle loads are permissible. The waisted design allows for a greater steering angle.



The Fendt Reaction steering system ensures optimal straight-ahead driving at fast speeds on the road.

LIGHTING AND MOUNTING LOCATIONS

Increased lighting and thousands of ideas for many operations.



A light sensor automatically adapts the terminal lighting to the current light conditions.



The crossed beams of the front work lights effectively prevent shadows.



The lower links can be fixed with the shut-off valve on the rear linkage.



□ Power beyond pressure and control line for full hydraulic power transmission.



Large tyres of up to 540/65 R24 at the front and up to 600/65 R38 at the rear.



□ ISOBUS implement control connection.



Both the DCUP and CUP couplings permit the hydraulic valves to be coupled under pressure and mounting and removing implements is easy. The self-closing valve flaps offer secure protection against contamination through dirt or water.



The entire lighting concept, with up to six work lights for the rear alone, offers exceptionally good illumination for safe and comfortable work, even in the dark. For those who need extra bright lights and would also like to save power, can choose the Fendt 300 Vario with LED work lights.



The rear power lift and one spool valve can be controlled from either rear fender.



Interfaces at the rear include the signal socket, hydraulic top link, lower links with hooks, spool valves, free return, air brake, power beyond pressure and control lines, hydraulic trailer brakes, 7-pin socket, hitch, 540/540E/1000rpm rear PTOs, bottom hitch configuration, rigid drawbar and much more.

EQUIPMENT VARIANTS

Fendt 300 Vario. Yes.

Standard and optional equipment
Standard equipment: ■
Optional equipment: □

		Power	Profi	ProfiPlus
Engine	Preheater unit (engine, transmission oil)	□	□	□
Transmission	Vario TMS - Tractor Management System	■	■	■
	Turboclutch function	■	■	■
	Shuttle function, stop-and-go function	■	■	■
	Cruise control	■	■	■
	Acoustic signal when reversing	□	□	□
Vario operation	Speed control lever with cruise control and engine speed memory, automatic modes	■		
	Multi-function joystick with cruise control, engine speed memory, automatic modes, controls for hydraulics		■	■
	Varioterminal 7 with touchscreen and key control		■	■
	Variotronic implement control for ISOBUS		□	□
	Variotronic [®] - Headland Management System ready for automatic steering system		■	■
	Guidance system VarioGuide NovAtel / Trimble			□
Cab	Active charcoal filter	□	□	□
	Mechanical cab suspension	□	■	■
	Pneumatic cab suspension		□	□
	Super comfort seat 3-point belt	□	□	□
	Comfort seat, air sprung	■	■	■
	Super Comfort Seat, air sprung	□	□	□
	Heating with stepless fans	■	■	■
	Air-conditioning	■	■	■
	Integrated automatic climate control		□	□
	Climate-controlled storage compartment	■	■	■
	Split windscreen and door on right	□	□	□
	Continuous windscreen	■	■	■
	One-piece windscreen and door on right	□	□	□
	Rear window heated	□	□	□
	Segment wipers front	■	■	■
	Parallel wipers front	□	□	□
	Rear window wash/wipe	□	□	□
	Ext. rearview mirror, mechanically adjustable	■	■	■
	Ext. rearview mirror electrically adjustable and wide-angle mirror heated		□	□
	Radio mounting kit with two stereo speakers	■	■	■
	Radio CD MP3	□	□	□
	Radio CD MP3 hands-free speaking system	□	□	□
	Self-cancelling indicators	■	■	■
Lighting	Auxiliary lights front	□	□	□
	Work lights A-pillar	□	□	□
	Work lights A-pillar, rear mudguard	□	□	□
	Work lights LED A-pillar, rear mudguard	□	□	□
	Rear roof work lights 4x	□	■	■
	LED rear roof work lights 4x	□	□	□
	Front external roof work lights 2x	■	■	■
	LED front external roof work lights 2x	□	□	□
	Front internal roof work lights 2x	□	□	□
	LED front internal roof work lights 2x	□	□	□
	Rotating beacons	□	□	□
Chassis	Front axle suspension self-levelling, lockable	□	■	■
	Steering brake	■	■	■
	Automatic trailer steering axle lock		□	□
	Compressed air system 1-/2- circuit system	□	□	□
	Compressed air Duomatic coupling	□	□	□

		Power	Profi	ProfiPlus
4WD	Automatic front differential lock	■	■	■
	Comfort engagement controls for 4WD / differential locks	■	■	■
	Rear / front differential with 100% disc locking and steering angle sensors	□	■	■
Power lift	Tractive power and stepless mixed control	■	■	■
	Clearance, position control	■	■	■
	Da front power lift, with external control (separate valve)		□	□
	Front power lift sa/da (connection middle 1st / 3rd valve)	□		
	Comfort front power lift da, with position control, external controls		□	□
	Comfort front power lift da, with position control and relief control, external controls		□	□
	Electrohydraulic power lift sa (EHR),	■	■	■
	Externally controlled rear power lift	■	■	■
	Shock load stabilising, electro-hydraulic power lift control	■	■	■
	Top link rear hydraulic	□	□	□
PTO	Front: 1000 rpm	□	□	□
	Rear PTO 540/WZW/1000 rpm	□	□	□
	Rear PTO 540/540E/1000 rpm	■	■	■
	Rear: Flanged PTO 540/540E/1000 rpm	□	□	□
	External controls for rear PTO	■	■	■
	PTO comfort control, electrohydr. preselection	■	■	■
Hydraulic system	EHS valve actuation mechanical crossgate lever	■		
	EHS valve actuation crossgate lever, multi-function joystick		■	■
	External control for hydraulic control unit at rear		□	□
	Hydraulic tandem pump, hydraulic oil cooler (46+ 38 l/min)	■		
	Load sensing system with axial piston pump (110 l/min)	□	■	■
	1st and 2nd EHS valve at rear	■	■	■
	1. EHS valve middle and rear and second EHS valve at rear	□		
	3. EHS valve middle and rear	□		
	3. EHS valve at rear	□	□	□
	4. EHS valve at rear or 3rd EHS valve at rear and 1st EHS valve in front		□	□
	4. EHS valve at rear	□	□	□
	Hydraulic power beyond connection	□	□	□
	Return middle right	■	■	■
	Return rear	■	■	■
	Unpressurised rear return flow	□	□	□
	CUP coupling rear	■	■	■
	Bio hydraulic oil	□	□	□
Front loader	Front loader attachment parts	□	□	□
	Front loader Cargo 3X/70	□	□	□
	Front loader Cargo 4X/75	□	□	□
	Front loader Cargo 4X/75 Compact	□	□	□
	Front loader Cargo 4X/75 Profi	□	□	□
Additional equipment	Manual hitch	■	■	■
	Automatic trailer hitch with remote control, rear	□	□	□
	Ball coupling, height adjustable	□	□	□
	Ball coupling, short, in the bottom hitch	□	□	□
	Hitch	□	□	□
	Drawbar	□	□	□
	Piton-fix	□	□	□
	Wheel weights, rear wheels	□	□	□
	Pivoting front wheel mudguard	□	■	■
	Impulse socket for external implement operation	■	■	■

FENDT 300 VARIO

Technical specifications.



Fendt 300 Vario		310	311	312	313	
Engine	Rated power ECE R 120	kW/hp	74/ 100	83/ 113	90/ 123	97/133
	Maximum power ECE R 120	kW/hp	83/ 113	90/ 123	98/ 133	105/142
	Rated power EC 97/68	kW/hp	74/ 100	83/ 113	90/ 123	97/ 133
	Maximum power EC 97/68	kW/hp	83/ 113	91/ 123	98/ 133	105/ 142
	No. of cylinders	Number	4	4	4	4
	Cylinder bore/stroke	mm	108/ 120	108/ 120	108/ 120	108/ 120
	Cubic capacity	cm ³	4400	4400	4400	4400
	Rated speed	rpm	2100	2100	2100	2100
	Optimum fuel consumption	g/kWh	199	199	199	199
	Max. torque at 1550 rpm	Nm	485	524	559	596
	Torque rise	%	55	47	44	42
Fuel level	litres	210	210	210	210	
AdBlue tank	litres	23	23	23	23	
Transmission and PTO	Transmission type		ML 75	ML 75	ML 75	ML 75
	Speed range forward	km/h	0,02-40	0,02-40	0,02-40	0,02-40
	Speed range reverse	km/h	0,02-25	0,02-25	0,02-25	0,02-25
	Top speed	km/h	40	40	40	40
	Rear PTO		540/ 540E/ 1000	540/ 540E/ 1000	540/ 540E/ 1000	540/ 540E/ 1000
	Rear PTO optional (including ground speed PTO)		540/1000/4,2	540/1000/4,2	540/1000/4,2	540/1000/4,2
Front PTO option		1000	1000	1000	1000	
Power lift and hydraulics	Dual hydraulic pump	l/min	46+38	46+38	46+38	46+38
	Variable flow pump	l/min	110	110	110	110
	Working pressure / control pressure	bar	200	200	200	200
	Max. valves (front/centre/rear) Power	Number	0/2/4	0/2/4	0/2/4	0/2/4
	Max. valves (front/centre/rear) Profi	Number	0/0/4	0/0/4	0/0/4	0/0/4
	Max. available hydraulic oil volume	litres	43	43	43	43
	Max. lift capacity of rear power lift	daN	5960	5960	5960	5960
	Max. lift capacity of front power lift	daN	3130	3130	3130	3130
Electrical features	Batteries	Number	1	1	1	1
	Battery power	Ah/V	100/ 12	100/ 12	100/ 12	100/ 12
	Alternator	V/A	14/ 150	14/ 150	14/ 150	14/ 150
Tyres	Front tyres (standard)		440/65R24	440/65R24	480/65R24	480/65R24
	Standard tyres rear		540/65R34	540/65R34	540/65R38	540/65R38
	1. Optional front tyres		480/65R24	480/65R24	16.9R24	16.9R24
	1. Optional rear tyres		540/65R38	540/65R38	18.4R38	18.4R38
	2. Optional front tyres		540/65R24	540/65R24	540/65R24	540/65R24
	2. Optional rear tyres		600/65R38	600/65R38	600/65R38	600/65R38
Dimensions	Front track width (standard tyres)	mm	1685	1685	1820	1820
	Rear track width (standard tyres)	mm	1660	1660	1800	1800
	Overall width with standard tyres	mm	2220	2220	2320	2320
	Overall length	mm	4336	4336	4336	4336
	Overall height - comfort cab	mm	2820	2820	2860	2860
	Overall cab height with standard tyres without VarioGuide	mm	2820	2820	2860	2860
	Overall cab height with standard tyres with VarioGuide	mm	2870	2870	2910	2910
	Max. ground clearance	mm	510	510	510	510
Wheelbase	mm	2420	2420	2420	2420	
Weights	Unladen weight (base tractor with cab - full tanks, without driver)	kg	4810	4810	4970	4970
	Max. permissible overall weight	kg	8500	8500	8500	8500
	Max. permissible overall weight up to 40 km/h country-specific exception approval required	kg	8500	8500	8500	8500
	Max. trailer hitch load	kg	2000	2000	2000	2000

FAQ. EVERYTHING ABOUT FENDT.

What can we do for you?

How does Fendt Service make a difference?

Customer service to us means knowing and understanding your work in order to meet your demands for reliability and safety and to act in your economic interest. We stand behind our products and have developed them for the highest demands and long-term operation. Our service is the partnership aspect for your work.

Can I update Variotronic?

Fendt Variotronic can be updated. In this way you always have the latest version on your Fendt and have the future on your terminal. Please contact your dealer for further information.

What is Fendt Expert?

Become a Vario pro with Fendt Expert driver training: Are you familiar with all the functions that your technology has to offer? Take advantage of the technology that is found in every Fendt Vario and learn how to optimise the use of all the features with Fendt Expert. Our team of professional instructors offers you competent instruction to enable you to exploit the full performance potential of your Fendt tractor. Inform yourself through your dealer and sign up.



Contact Fendt.

fendt.com

Find everything on line - from brochures to technical specifications, from reports about customers or our company to our Fendt event calendar.

Fendt Configurator

The Fendt Vehicle Configurator allows you to choose from all available equipment variations and put together the optimally equipped vehicle for your farm. The Fendt Configurator is available on-line at www.fendt.com where a quick link will lead you directly to the start page.

fendt.tv

Fendt around the clock – our Fendt Media Library makes it possible. Our internet TV provides you with 24/7 news and information about Fendt.

Test drive

“Go to fendt.com and select Demonstration Service on the Service pagewhere you may register for a test drive of your preferred Fendt vehicle.”

facebook.com/FendtGlobal

More than 200,000 fans are friends with Fendt on Facebook. Come and have a look.



FENDT

Leaders drive Fendt.



www.fendt.com

AGCO GmbH - Fendt Marketing
D-87616 Marktobendorf, Germany

 **AGCO**
Your Agriculture Company

Fendt is a worldwide brand of AGCO.
All information on product delivery, appearance, performance, dimensions and weight, fuel consumption or running costs are current at the time of publication. Changes may be made before the time of purchase.
Your Fendt dealer will be happy to supply you with up-to-date information. Vehicles are not shown with country-specific equipment.